

# Wollaton West

## Area Committee

## Executive Summary

September 2012

# Ward priorities – Progress update

THEME	PRIORITY	KEY ACTIONS
<b>SAFER</b>	<ul style="list-style-type: none"> <li>• Reduce commuting traffic along Russell Avenue and Cambridge Road</li> <li>• More Neighbourhood Policing patrolling the Ward to deter criminal activity.</li> </ul>	<ul style="list-style-type: none"> <li>• Councillors/Traffic Management are working to elevate the problem</li> <li>• PCSO's and CPO's routinely out on patrol.</li> <li>• Incidents of ASB not attended by NPT are followed up by PCSO's when back on duty.</li> <li>• Neighbourhood Policing Priority</li> </ul>
<b>NEIGHBOURHOODS</b>	<p>Improve the environment – parking issues are a major concern across the area – Harrow Road outside Middleton Primary School</p> <p>Improve local area – pruning of hedges and trees in open spaces and parks.</p>	<ul style="list-style-type: none"> <li>• Traffic Management/Enforcement/Councillors/Locality Management launched the 'Keep Me Safe' campaign on 4<sup>th</sup> October 2012.</li> <li>• All grass verges in the area are cut on a 2 – 3 week cycle from April – October dependant on the weather and plant availability.</li> <li>• Other pruning i.e. shrubs on parks and on the estates and also on the garden assistance programme are carried out between October and November</li> </ul>
<b>FAMILIES</b>	<ul style="list-style-type: none"> <li>• Reduce antisocial behaviour drug taking – Matins Pond and alleyways.</li> <li>• More activities for young people at local venues.</li> <li>• Youth Activities advertised widely in the area.</li> </ul>	<ul style="list-style-type: none"> <li>• Drug related activity followed up by NPT. Martins Pond regularly checked by the NPT.</li> <li>• Play and youth workers detached work around Wollaton Vale community centre and railway bridge, additional youth sessions at Wollaton Vale Community Centre and Harrow Road Community Centre are in place.</li> <li>• Timetables produced term time and distributed by Wollaton Children Centre</li> </ul>
<b>HEALTH</b>	<ul style="list-style-type: none"> <li>• More targeted support for the elderly, the area has high levels of pensionable households 40%</li> </ul>	<ul style="list-style-type: none"> <li>• Organise events and health drop-ins at community venues with health partners.</li> <li>• Recruit Change Maker volunteers who will help raise awareness of health issues in the community</li> <li>• Promote Decade of Better health activities</li> <li>• Setup/Promote healthy living walks in parks</li> </ul>
<b>WORKING</b>	<ul style="list-style-type: none"> <li>• More Jobs, Training opportunities advertised widely in the area, especially for youth.</li> </ul>	<p>Work with Economic Development/Wollaton Community Centre/Wollaton Library etc to ensure that training and employment opportunities are advertised.</p> <p>NDO's/ Councillors to support groups and agencies</p> <p>Signpost to groups and agencies and send job and training opportunities information to all community groups and associations</p> <p>Attend Worklessness Working Group and link with other foras.</p>

# Community Engagement

## Events Delivered – September/October

Event	Lead Partners	Date/Time	Venue
Local Action Group	Councillors, Locality Management, Police, Residents	4 <sup>th</sup> September, 5pm – 6:30pm	Wollaton Library
Ward Walk	Councillors, Traffic Management, Locality Management	26 <sup>th</sup> September 2012 1:00pm – 3:00pm	Harrow Road area
Local Action Group	Councillors, city Services, Locality Management, Residents	4 <sup>th</sup> October 2012 7:00pm – 8:30pm	Kingswood Methodist Church
Middleton Primary School – Keep Me Safe campaign launch	Wollaton West Councillors/Traffic Management/Enforcement/Councillor Jane Urquhart /Locality Management/Middleton Primary School teachers and school children	4 <sup>th</sup> October 2012	Outside of Middleton Primary School, Harrow Road
Wollaton West Week of Action	Locality Management/Councillors/City Services/Wollaton Library/Places for People/Police	22 <sup>nd</sup> October – 26 <sup>th</sup> October 2012	Bramcote Lane/Wollaton Library/Calderdale Estate/Flyingdale Way

## Future Events and Activities Planned

Event	Lead Partners	Date/Time	Venue
Bramcote Christmas Lights Celebration	Locality Management Police, Schools, Councillors	6 <sup>th</sup> December 6:00pm – 6:45pm	Bramcote Lane Shopping Centre

# Community Engagement

## Ward Walks

Area/Estate	Date/Time	Meeting Point
Bramcote Lane Shopping Centre Gransley Avenue	21 <sup>st</sup> November 2012 1:00pm – 3:00pm	At the front of the Notice board on Bramcote Lane
Grangewood Drive Area	19 <sup>th</sup> December 2012	Outside of Woodvale/ Grangewood Court
Tranby Gardens Area	23 <sup>rd</sup> January 2013 1:00pm – 3:00pm	Corner of Tranby Gardens and Wollaton Road

## Community Meetings

Group	Date	Venue
Wollaton Park Community Association General Meeting	7 <sup>th</sup> November – 6:30pm	Wollaton Park Community Centre, Harrow Road, Wollaton
Wollaton West Local Area Group Meeting	13 <sup>th</sup> November - 5:00pm – 6:30pm	Wollaton Library, Bramcote Lane, Wollaton
Wollaton Park Residents Meeting	21 <sup>st</sup> November – 7:30pm	Wollaton Park Community Centre, Harrow Road, Wollaton
Wollaton Park Community Association General Meeting	5 <sup>th</sup> December – 6:30pm	Wollaton Park Community Centre, Harrow Road, Wollaton
Wollaton East Local Area Group Meeting	13 <sup>th</sup> December – 7:00pm – 8:30pm	Kingswood Methodist Church

# Finance

## Ward Councillor Budgets

Total Amount allocated this period - £15,000

Budget Remaining Unallocated - £3,399 + £18.127 Community Safety & Wellbeing (inc. of 2012-2013 allocation)

## Area Capital Fund

Total Amount allocated this period - £67,544

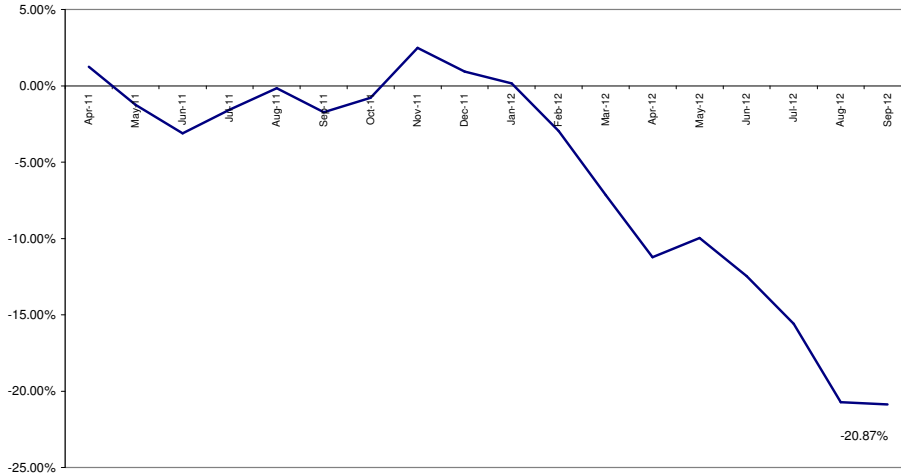
Budget Remaining Unallocated-£58,394 (inc. of 2012-2013 allocation)

## Others – Section 106, NCH Environmentals, Other Funding

None this period

# Crime

All Crime in Wollaton West -  
% Change over 2010/11 Baseline (Rolling 12 Month)



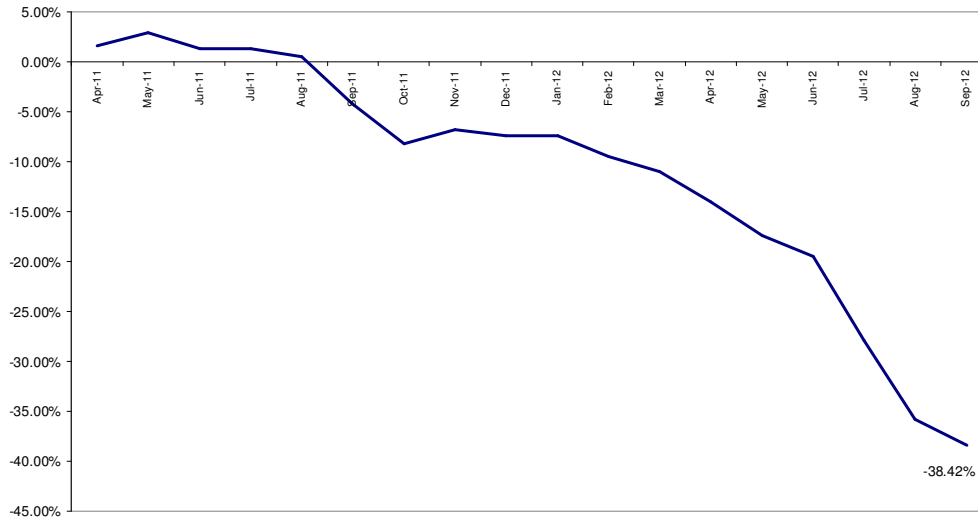
Red		
Amber		
Green*	1 fewer crime	-2.33%

\*Refers to September 2012 compared to September 2011

- All Crime in Wollaton West in September 2012 is **down 2% (1 crime) against September 2011**.
- Year to date All Crime in the ward is **down 27%** against the previous year.
- The above graph shows that Wollaton West is **down 21% against a long term 2010/11 baseline**.
- In regard to All Crime Rate (per 1000 of the population) Wollaton West ranks **20<sup>th</sup> out of the 20 wards**; the lowest All Crime rate of the wards.

# All ASB

All ASB in Wollaton West -  
% Change over 2010/11 Baseline (Rolling 12 Months)



Red		
Amber		
Green*	10 fewer calls	-43.48%

\*Refers to September 2012 compared to September 2011

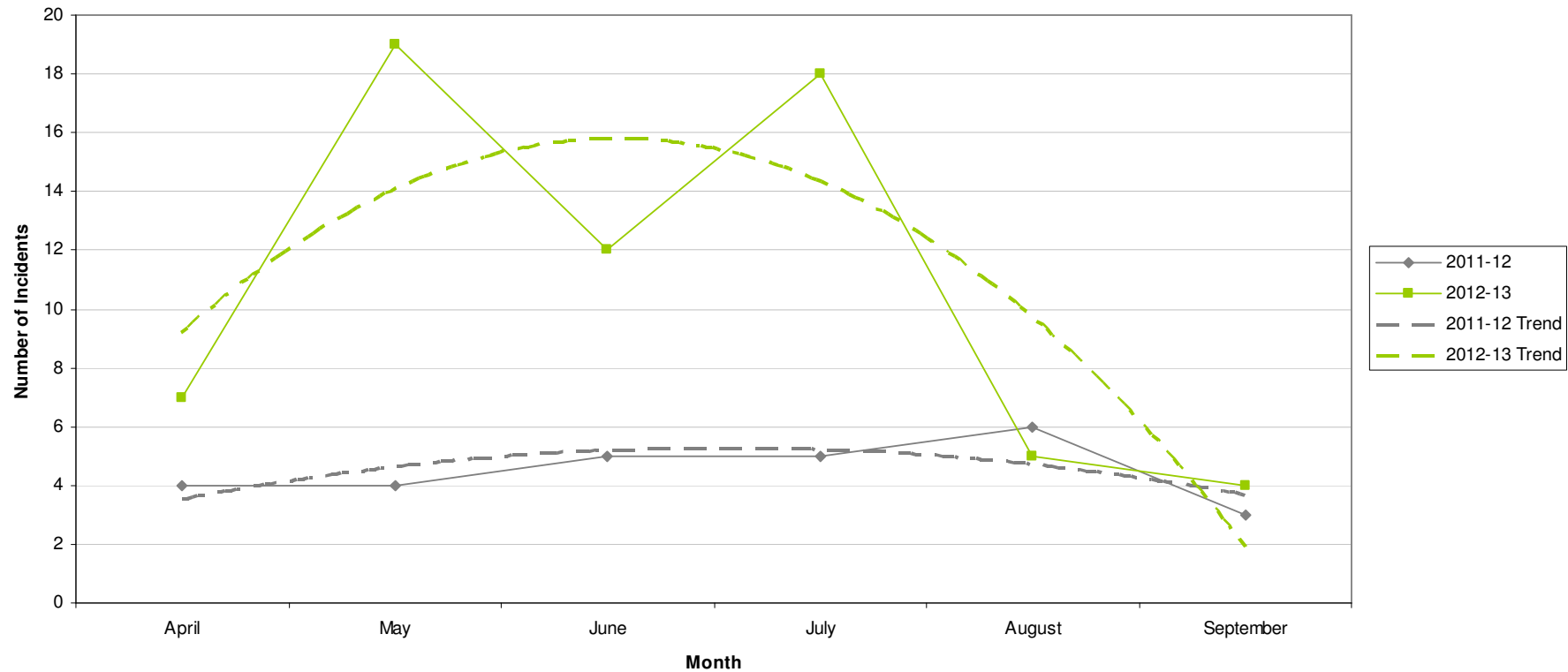
- In September 2012 compared to September 2011 Wollaton West has experienced a reduction of 43% in All ASB calls.
- Wollaton West has also experienced a sizeable reduction year to date compared to the previous year (49% 104 calls).
- Against a long term measure, Wollaton West is down 38% against a 2010/11 baseline. The above graph emphasises the general decline over time in all ASB against this measure.
- The vast majority (69%) of All ASB calls received in the ward were for 'Nuisance'. This finding is consistent with performance observed in the City as a whole.

# Graffiti Reports

<b>RED</b>	<b>1 more report</b>	<b>+33%</b>
<b>AMBER</b>		
<b>GREEN</b>		

- All data refers to a comparison with the previous year's month
- It is proposed that performance over time graphs be used for each indicator
- Historic data for comparison is not available for dog fouling

Incidents of Graffiti



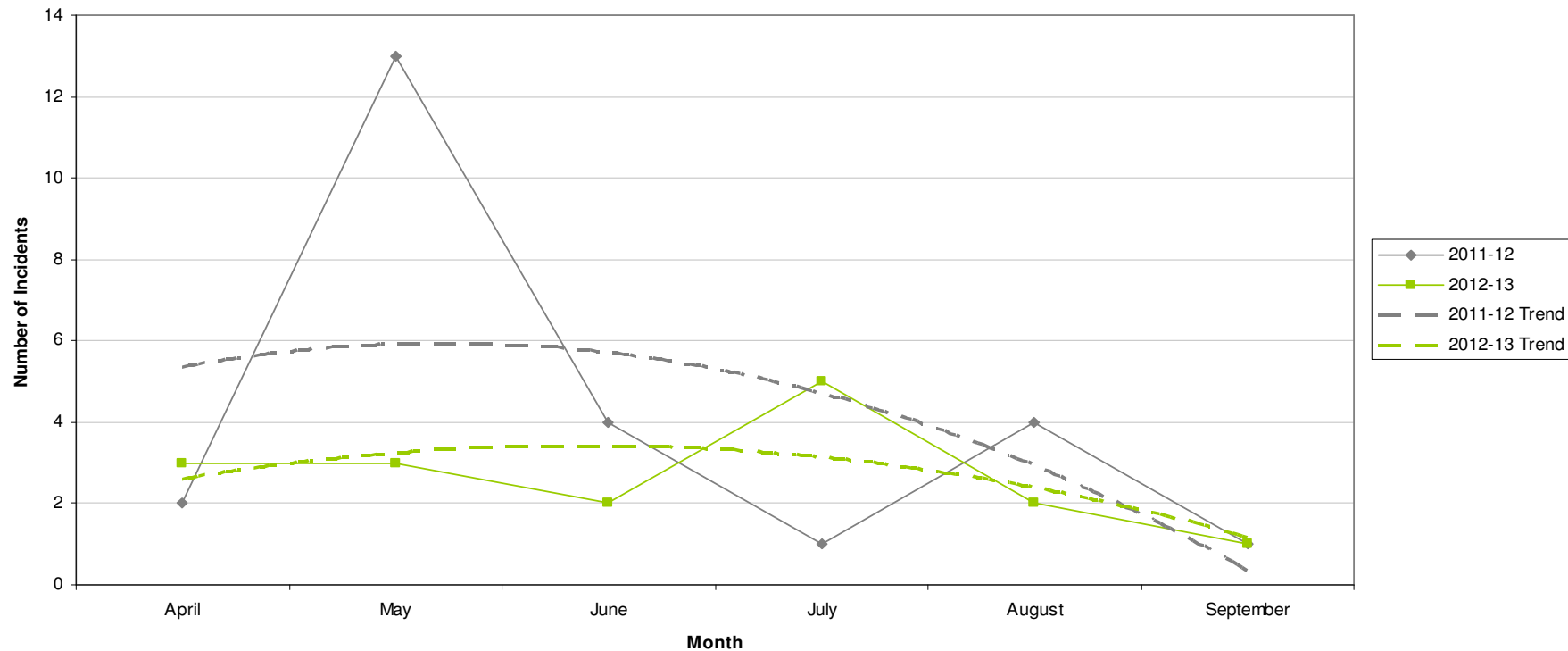


# Fly Tipping

<b>RED</b>	
<b>AMBER</b>	<b>No change</b>
<b>GREEN</b>	

- All data refers to a comparison with the previous year's month
- It is proposed that performance over time graphs be used for each indicator
- Historic data for comparison is not available for dog fouling

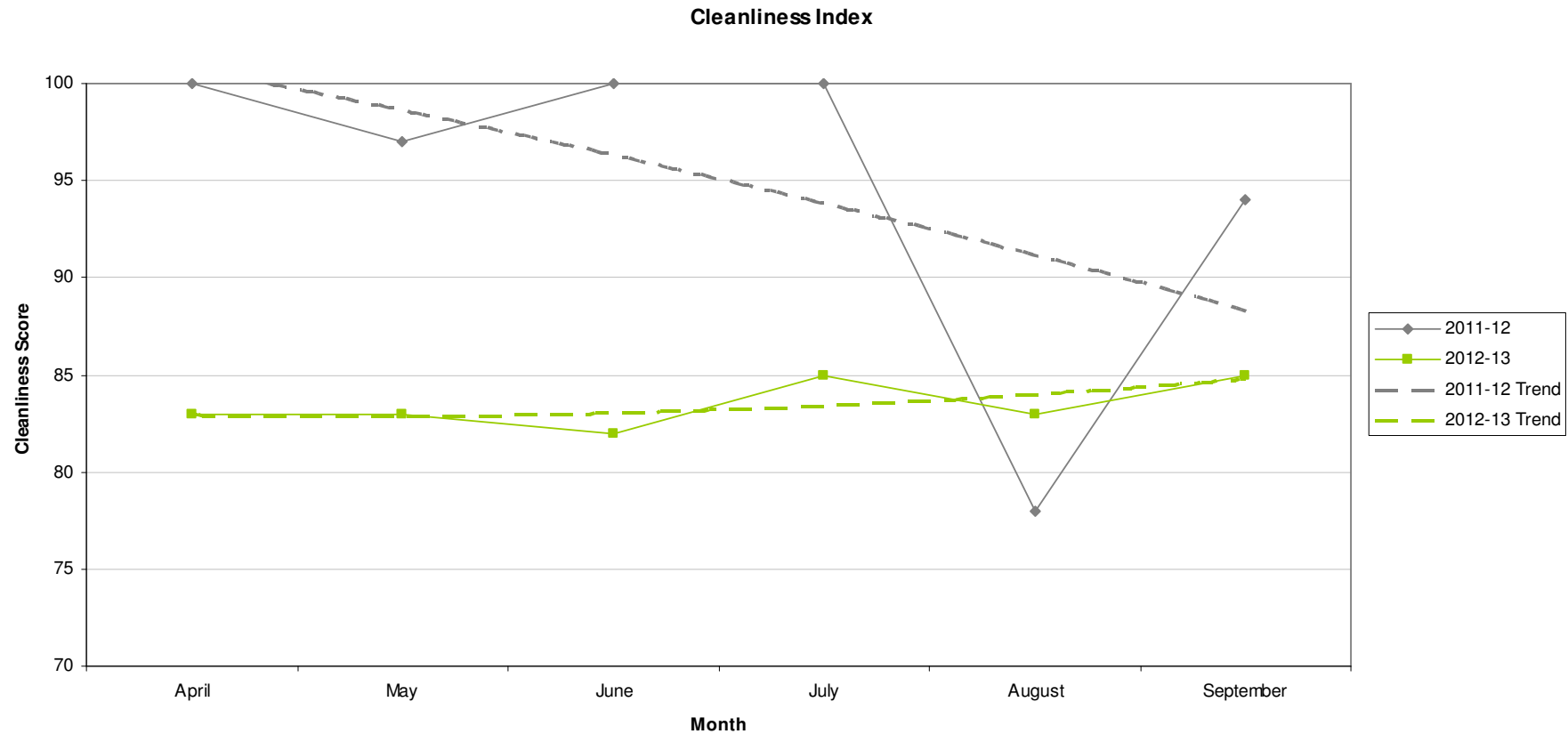
Incidents of Fly Tipping



# Cleanliness Index

<b>RED</b>	<b>85</b>	<b>9 point decrease</b>
<b>AMBER</b>		
<b>GREEN</b>		

- All data refers to a comparison with the previous year's month
- It is proposed that performance over time graphs be used for each indicator
- Historic data for comparison is not available for dog fouling



# Unemployment Rate

Ward	Aug-12			Change in last month		Change in last year	
	Number	Rate	City Rank	Number	%	Number	%
Arboretum	830	7	9	12	1.5	86	11.6
Aspley	1,197	10.6	1	15	1.3	57	5
Basford	730	6.6	11	21	3	25	3.5
Berridge	1,090	7.5	6	17	1.6	115	11.8
Bestwood	989	8.7	4	-26	-2.6	-19	-1.9
Bilborough	762	7.3	7	-36	-4.5	6	0.8
Bridge	756	7.2	8	6	0.8	15	2
Bulwell	1,045	9.6	2	-4	-0.4	32	3.2
Bulwell Forest	444	4.9	15	-12	-2.6	-5	-1.1
Clifton North	381	4.3	16	-14	-3.5	27	7.6
Clifton South	506	5.8	12	12	2.4	-11	-2.1
Dales	883	7.6	5	-10	-1.1	8	0.9
Dunkirk and Lenton	262	2.4	19	-5	-1.9	-27	-9.3
Leen Valley	351	5	14	13	3.8	26	8
Mapperley	750	6.7	10	31	4.3	8	1.1
Radford and Park	776	4.1	17	-19	-2.4	36	4.9
Sherwood	552	5.1	13	-19	-3.3	-71	-11.4
St Ann's	1,242	9	3	13	1.1	29	2.4
Wollaton East and Lenton Abbey	144	1.5	20	9	6.7	4	2.9
<b>Wollaton West</b>	<b>262</b>	<b>2.8</b>	<b>18</b>	<b>29</b>	<b>12.4</b>	<b>25</b>	<b>10.5</b>

Source: ONS claimant count August 2012 (from Nomis)

*This is an edited version of a report produced by: Geoff Oxendale, Information and Research Officer, Nottingham City Council*

# Housing



## Wollaton West Ward

Indicator	Current Target	2010/11	2011/12	2012/13		
		Value	Value	Value	Status	Trend
Average void re-let time for Wollaton West Ward	26	57.44	18	66.6		
Lettable voids Wollaton West Ward		3	3	2		
Empty properties awaiting decommission in Wollaton West Ward		0	0	0		

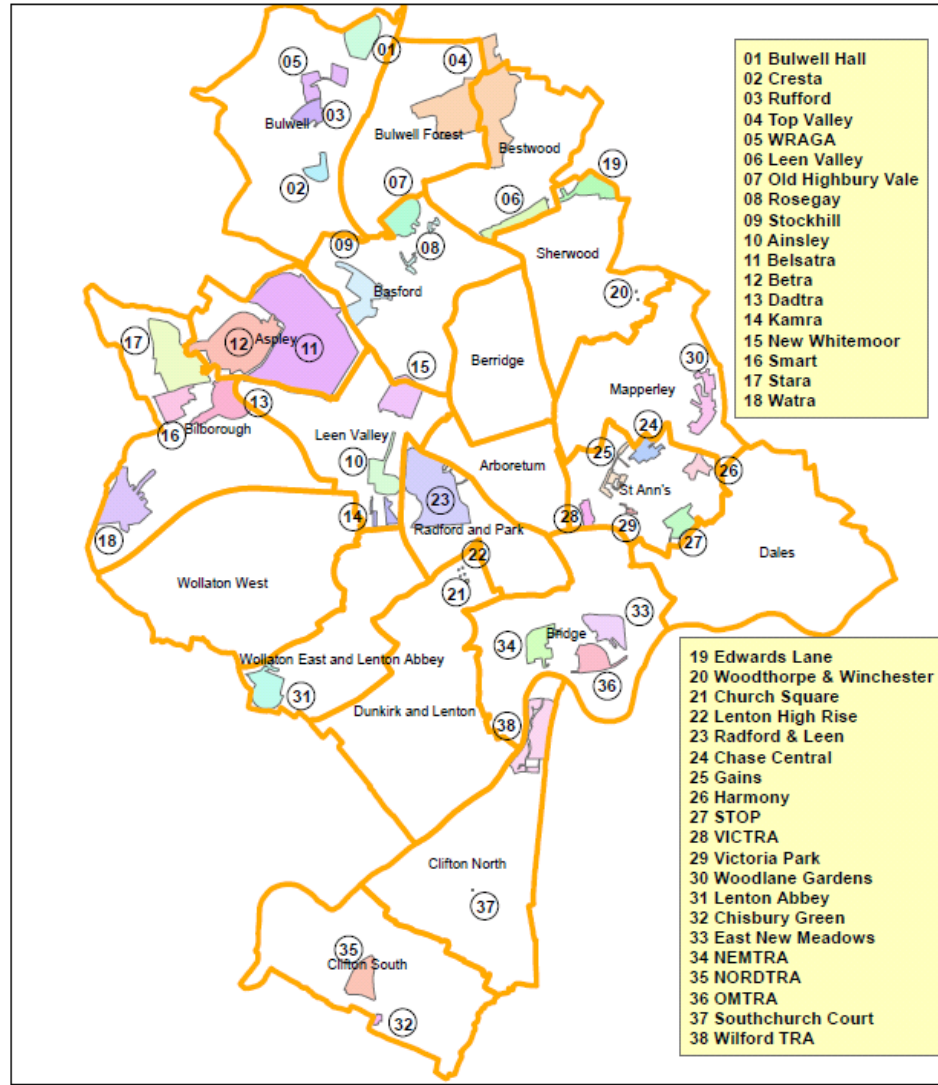
## Estate star ratings (from Tenant Service Inspectors)

Indicator	2010/11		2011/12		2012/13		
	Value	Status	Value	Status	Value	Status	Trend
Estate star rating - Wollaton	3 Star		3 Star		3 Star		

## Rent Collection - Hyson Green

Indicator	Current Target	2010/11	2011/12	2012/13		
		Value	Value	Value	Status	Trend
Rent charged that has been collected - Hyson green office area	100%	100.7%	101.2%	100.4%		

# Housing



Map of Tenant and Resident Associations by Ward

# Community Protection

In Wollaton West in the last month there were no court outcomes:

*Data has been received from Community Protection and where postcodes have been listed these have been geo-coded and mapped to determine the Ward. All addresses relate to the address of the Perpetrator.*

*FPNs are not currently available at Ward level.*

# Methodology

Crime Data and ASB calls have been extracted from the Police systems and mapped to ascertain which Ward they occurred in.

Due to the dates of the meetings, data for all Wards was extracted at the same time at the start of the month - and as such is not officially 'validated' data.

Where possible the most recent data is used, although for some areas this may be a month further in arrears.

Discussions continue with other agencies regarding what further data can be included.